

PERFORMANCE. PRICE. TECHNOLOGY.

EDGEFILE[®] X7

Excellent Strength and Flexibility

EdgeEndo's Leading Proprietary
Global Platform: Most recognized
and proven solution!



EDGEENDO[®]



Scan for Digital
X7 Brochure

PERFORMANCE. PRICE. 1

EDGEFILE[®] X7

Heat Treated FireWire[™] NiTi

Constant taper .04 or .06

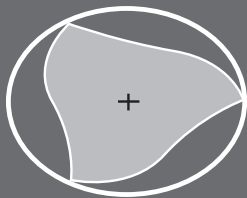


ISO Identification band

11 mm handle length for better posterior access.

Calibration rings

Silicon stop

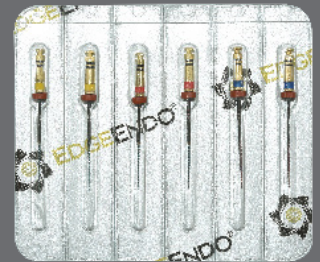


Parabolic Cross Section

Available in 3 lengths: 21, 25 & 29 mm

Maximum flute diameter 1 mm

Sterile Packaging



Heat Treated FireWire[™] NiTi

FireWire[™] NiTi alloy is an innovation in file metallurgy. It makes our files more flexible and significantly increases resistance to cyclic fatigue. FireWire[™] NiTi enables EdgeEndo[®] files to not “bounce back”, preserving canal anatomy, and carefully follows the canal as they shape.*



Highly flexible



No bounce back



High strength



Scan for more info on EDGE technology

*Based on resistance cyclic testing as shown on the FireWire NiTi Strength Graph:<http://edgeendo.com/comparative-study-of-cyclic-fatigue-resistance/> and price comparisons vs retail price. For more information, please visit www.edgeendo.com/matter-of-temperature/



EDGEENDO[®]

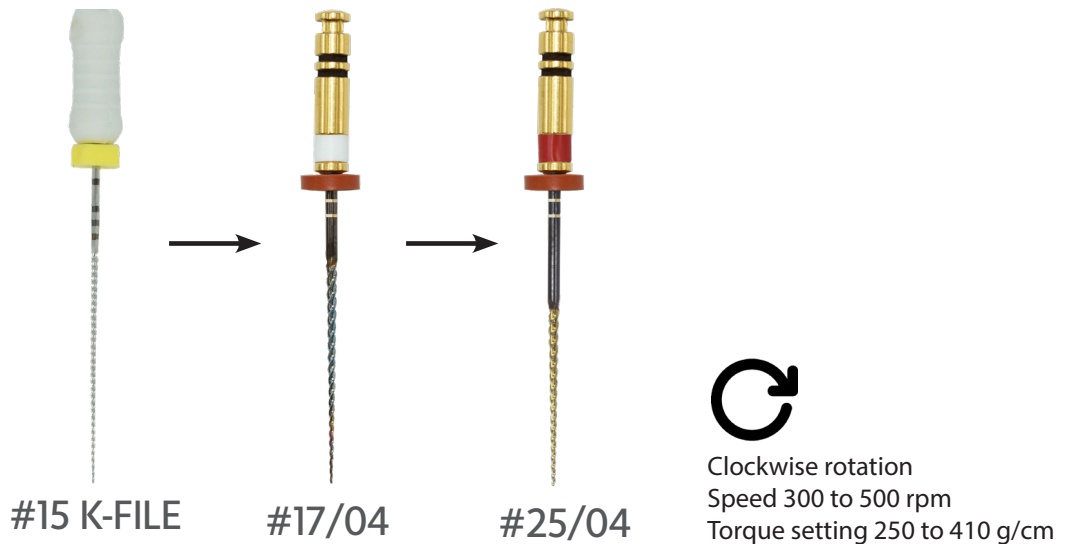
ORDER NOW

EDGEENDO.COM

TECHNOLOGY.

EDGEFILE® X7

Simplified Technique



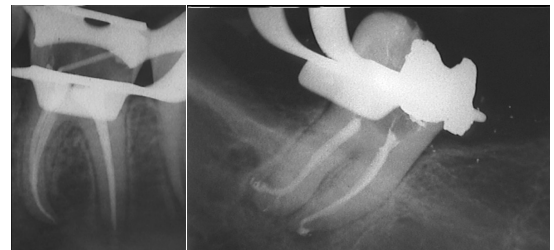
Simplified Technique Guide

1. Create straight line access to canal orifices.
2. Locate canals and explore using stainless steel hand instruments. Minimum size #15K file to working length recommended prior to rotary file use.
3. Irrigate before each hand or rotary file.
4. Use #17/04 file in one or more passes, alternating with small-sized hand files if necessary, until working length is reached. If more coronal flare is desired it can be achieved by incorporating the EdgeGlidePath file used in a brushing motion.
5. Use #25/04 to working length passively; if instrument has not reached working length use additional shaping instrument #20/04 to working length.
6. If #25/04 reached working length with minimal resistance or if clinician desires a larger apical shape additional instruments can be used (#30, #35, #40, etc).
7. For obturation instructions refer to the Minimally Invasive Obturation Technique on the last page.

*This technique is intended to be used as a guide only. Recommended by Professor Gianluca Gambarini.

“In my opinion, the X7 is the best rotary file system for minimally invasive endodontic therapy. The proprietary heat treatment and reduced maximum flute diameter allow for improved efficiency and safety in complex cases.”

-Professor Gianluca Gambarini, University of Rome La Sapienza, Dental School;
Director of Masters in Endodontics



EDGEENDO®


ORDER NOW

EDGEENDO.COM

EDGEFILE® X7

EdgeEndo's leading proprietary global file platform


- Proprietary heat treatment process - FireWire NiTi™ Alloy improves strength and flexibility*
- Available in .04 and .06 Constant Taper - Variable Pitch
- Maximum flute diameter 1mm allows for minimally invasive preparation
- Parabolic Cross Section non cutting tip - Maximizes file cutting efficiency
- Reduced handle length for increased posterior access
- ISO tip size 17-45
- Available lengths: 21, 25 & 29 mm

6-Pack	STERILE	Tip Size	Taper Size	Length		
				21 mm	25 mm	29 mm
	X7	17	04	9885267	9885268	9885269
			06	9885270	9885271	9885272
		20	04	9885273	9885274	9885275
			06	9885276	9885277	9885278
		25	04	9885279	9885280	9885281
			06	9885282	9885283	9885284
		30	04	9885285	9885286	9885287
			06	9885288	9885289	9885290
		35	04	9885291	9885292	9885293
			06	9885294	9885295	9885296
		40	04	9885297	9885298	9885299
			06	9885300	9885301	9885302
45	04	9885303	9885304	9885305		
	06	9885306	9885307	9885308		
EdgeFile® X7 Assorted Packs		20, 25, 30	04	9885309	9885310	9885311
		20, 25, 30	06	9885312	9885313	9885314

EDGEGLIDEPATH™

HEAT-TREATED FIREWIRE™ NiTi

- Alternative to ProGlider®
- Replacing as many as 8 instruments to create a glidepath faster
- Replaces #15, 20, 25, 30 & 35 hand files in a step-back technique and a #1, 2 & 3 Gates Glidden

4-Pack	STERILE	Tip Size	Length		
			21 mm	25 mm	31 mm
		19	9888387	9888388	9888389

EDGECORE™

- Alternative to Gutta Core™.

5 Pack + 1 Verifier

Family	Tip Size	Skus Number
X7	20	9885347
	25	9885348
	30	9885349
	35	9885350
	40	9885351
	45	9885352
	50	9885353



EDGEFILL™

- Alternative to Thermafill®.

6-Pack

Family	Tip Size	Skus Number
X7	20	9885354
	25	9885355
	30	9885356
	35	9885357
	40	9885358
	45	9885359
	50	9885360



GUTTA PERCHA POINTS

60-Pack

Family	Tip Size	Taper Size	Skus Number
EdgeFile® .04			
EdgeFile® GP .04	15	04	9885315
	20	04	9885316
	25	04	9885317
	30	04	9885318
	35	04	9885319
	40	04	9885320
	45	04	9885321
	50	04	9885322



PAPER POINTS

60-Pack

Family	Tip Size	Taper Size	Skus Number
EdgeFile® .04			
EdgeFile® PP .04	15	04	9885331
	20	04	9885332
	25	04	9885333
	30	04	9885334
	35	04	9885335
	40	04	9885336
	45	04	9885337
	50	04	9885338



MINIMALLY INVASIVE OBTURATION TECHNIQUE*

X7 both in .04 and .06 tapers are minimally invasive files, thus preserving thickness of pericervical dentin due to their maximum flute diameters of 1mm. Therefore both require a minimally invasive obturation technique using small, less tapered .04 gutta-percha cones. Such cones in sizes 25, 30 and 35 are smaller than 1mm and allow easy and predictable insertion to working length, without unnecessary coronal flaring that could potentially weaken the tooth.

- Using Orifice Openers or increasing coronal flaring permits the use of .06 cones, or .04 greater than 40, but it is a more invasive clinical approach.
- In case of X7.06 preparation it is suggested to trim .04 cones to get better tugback in the apical third.
- In wide canals (size 40 or bigger) use .04 gutta point cones one size larger (preferably), or perform additional coronal flaring.

*Recommended by Professor Gianluca Gambarini.



EDGEENDO® :: ORDER NOW :: EDGEENDO.COM